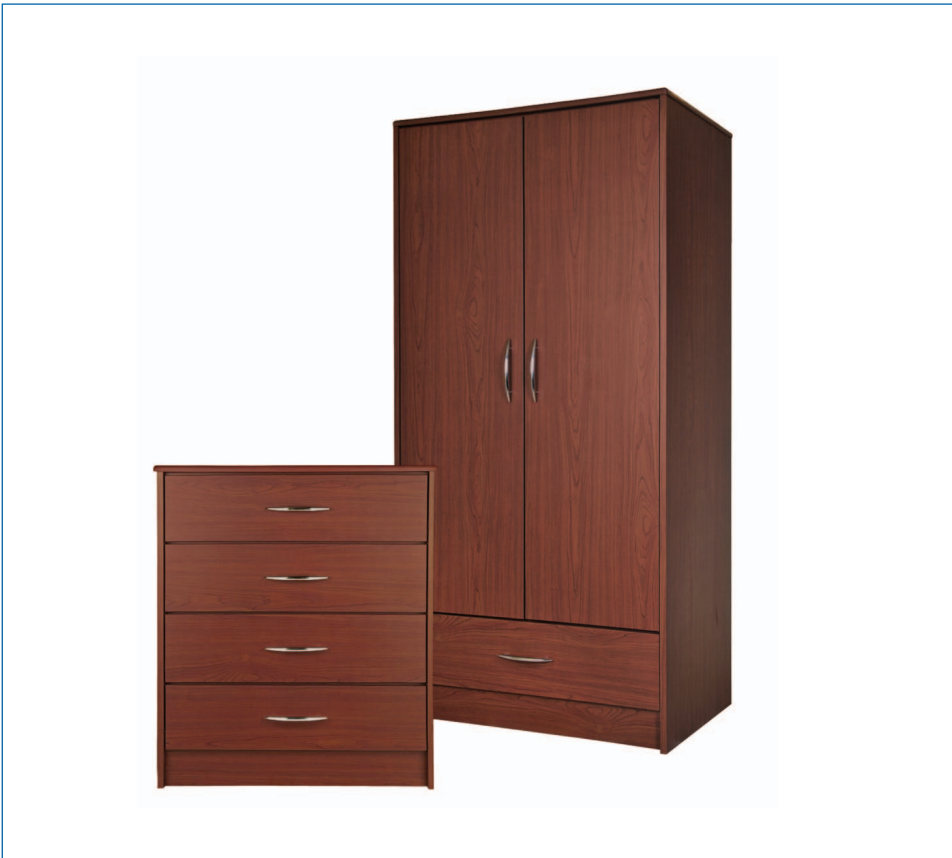


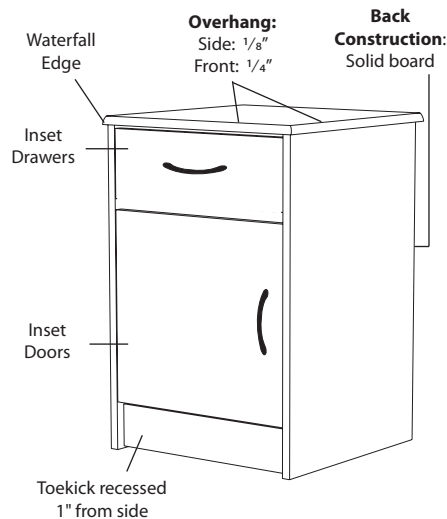
Atlanta Collection



The ultimate watchword in sophisticated elegance, the Atlanta Collection features softly rounded edges and waterfall detailing. Transitional styling makes this an ideal fit for healthcare interiors.

Features and Benefits:

- Kwalu's unique 10-year performance warranty on construction, finish and antimicrobial product protection.
- Complementary seating and wall protection provide a coordinated look for resident/patient room.
- Choose from dozens of hardware styles, including ADA compliant, and soft pulls.
- Available in a wide array of wood-grained finishes
- Includes a desk.



Primary Market

Senior Living

Cabinet Style

Transitional

Tops

- Edge Type: Waterfall
- Edge Thickness: $\frac{3}{8}$ "
- Top Overhang:
 - sides: $\frac{1}{8}$ "
 - front: $\frac{1}{4}$ "
 - back: 0"
- Corner Radius: $\frac{1}{2}$ "

Doors

- Door Style: Inset
- Door Hinge: 100° self closing Euro hinge; Armoire doors: 270° non self-closing hinge
- Edge Thickness: $\frac{1}{16}$ "

Drawers

- Drawer Style: Inset
- Drawer Slide: 100lb. side mounted Euro epoxy coated nylon roller slides
- Drawer Box Sides and Back: $\frac{1}{2}$ " board
- Drawer Bottom: $\frac{1}{4}$ " Board
- Drawer Construction: 3-piece construction; dowel and mechanical fasteners
- Drawer Pulls: ADA Compliant pulls available
- Edge thickness: $\frac{1}{16}$ "

Back Construction

Solid board

Desk Construction

$\frac{3}{4}$ " plywood

Joining System

Dowel and mechanical fasteners

Screws

$\frac{1}{4}$ " nickel plated Euro-screws

Venting

Venting on back of Bedside Cabinet with one drawer, one door only

Levelers

4 levelers in cabinets over 30" wide and/or 48" high

kwalu[®]

Furniture + Wall Protection

1-877-MY-KWALU kwalu.com